

# SRT06X SERIES ELECTROTHERMAL ACTUATOR

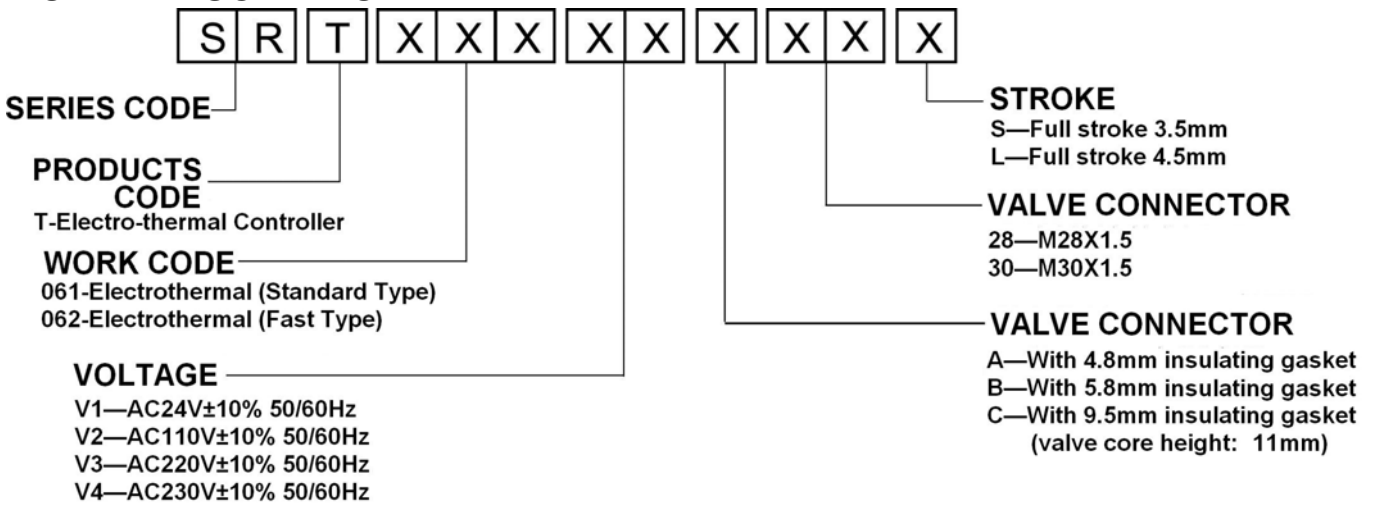
## DESCRIPTION

SRT06X electro-thermal actuator is designed to control the open/close of the pipe of chilled water or hot water for air-conditioning system so as to control the indoor temperature. Mount the actuator on the valve for chilled water or hot water; it can control the open/close of the valve through the electro-thermal sensor inside the actuator. Because the valve is normally closed, when it needs to work, the thermostat will provide an open signal by connecting it with the AC supply to make the actuator work, then the valve will be opened, the chilled water or hot water will enter into the fan coil or heat exchanger to supply cold air or warm air for the room; when the room temperature reaches the set point, the thermostat will shut the electro-thermal actuator power off, and the valve spring will close the valve and stop the water flow entering fan coil or heat exchanger. Through opening or closing the valve, room temperature will be always kept in the set range.

The electro-thermal actuator can be connected with the valve body quickly by using press-button. It is flexible, convenient, reliable performance, durable and energy saving.



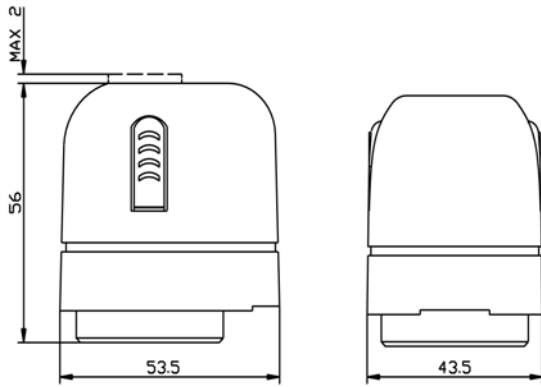
## MODEL DESCRIPTION:



## TECHNICAL DATA AND SPECIFICATIONS

HOUSING	MATERIAL		PA6110
	COLOR		White
CONTROL ELEMENT (T)			Electro-thermal wax sensor
WORKING FORCE INTENSITY (F) & DIRECTION			80N ≤ F < 130N; Direction: DOWNWARD
CONNECTOR	For SR2000 series valve		M28X1.5
	For SR2010 series valve		M28X1.5
	For SRV061 series valve or other companies' valves		M30X1.5
WORKING AMBIENT TEMPERATURE			-0.5°C~60°C
FIRST FULLY OPEN	SRT061 (STANDARD TYPE)	3.5mm Stroke	4~5.5 minutes (at 25°C)
		4.5mm Stroke	5~6.5 minutes (at 25°C)
	SRT062 (FAST TYPE)	3.5mm Stroke	2.5~3 minutes (at 25°C)
		4.5mm Stroke	2.5~4 minutes (at 25°C)
FULL STROKE			3.5mm or 4.5mm
PROTECTION CLASS			IP40
POWER CONSUMPTION			1.1VA
MAX. IMPACT CURRENT	24V		1.2A
	110V		0.9A
	220V/230V		0.7A
LEAD WIRE			1m length (2-core)
NET WEIGHT			94g

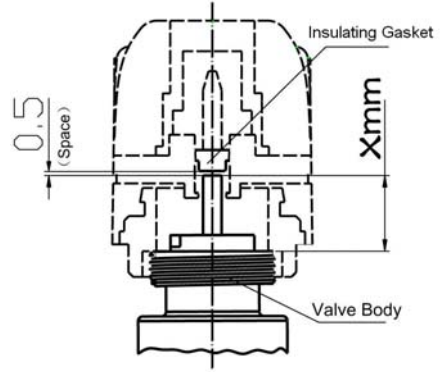
## DIMENSIONS (mm)



**Fig.1** Dimension

“MAX 2” means the max upward moving height when the actuator is overloaded (2mm).

## INSULATING GASKET

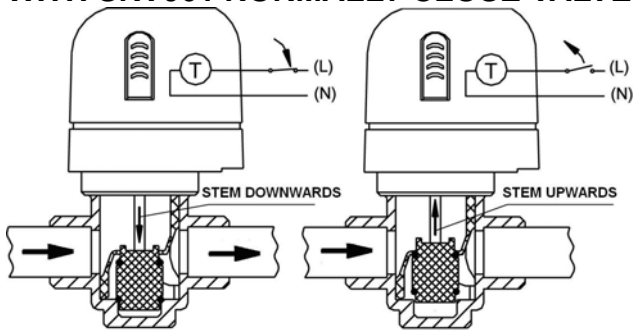


**Fig.2**

**Fig. 2** Insulating gasket dimension

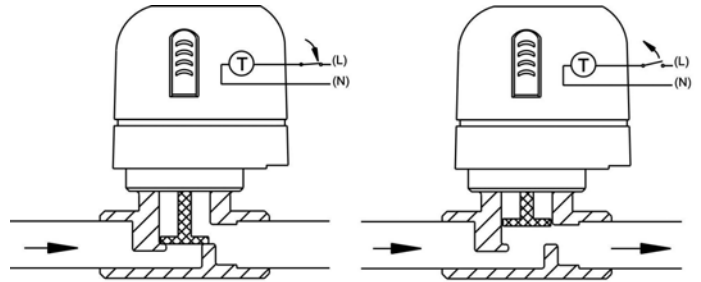
“Xmm” means the height from the top of the valve stem to the top of the connector. Standard height is 16mm (match with 4.8mm insulating gasket, and different height can be made by order).

## WITH SRV061 NORMALLY CLOSE VALVE



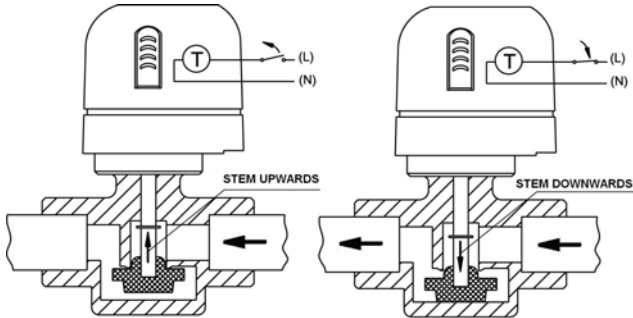
**Fig.3**

## WITH SRV061 NORMALLY OPEN VALVE



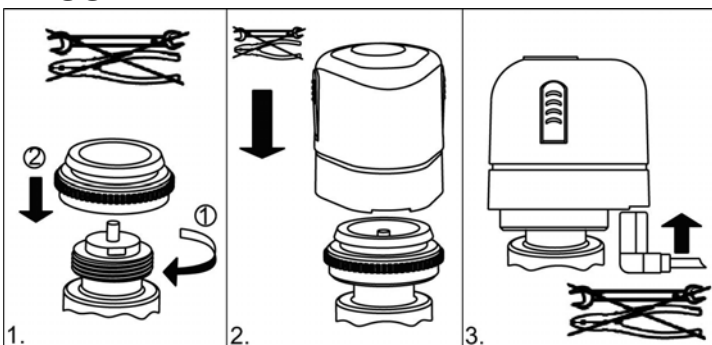
**Fig.4**

## WITH SRV2000 & SRV2010 VALVE



**Fig.5**

## ASSEMBLY



## DISASSEMBLY

